



New Water

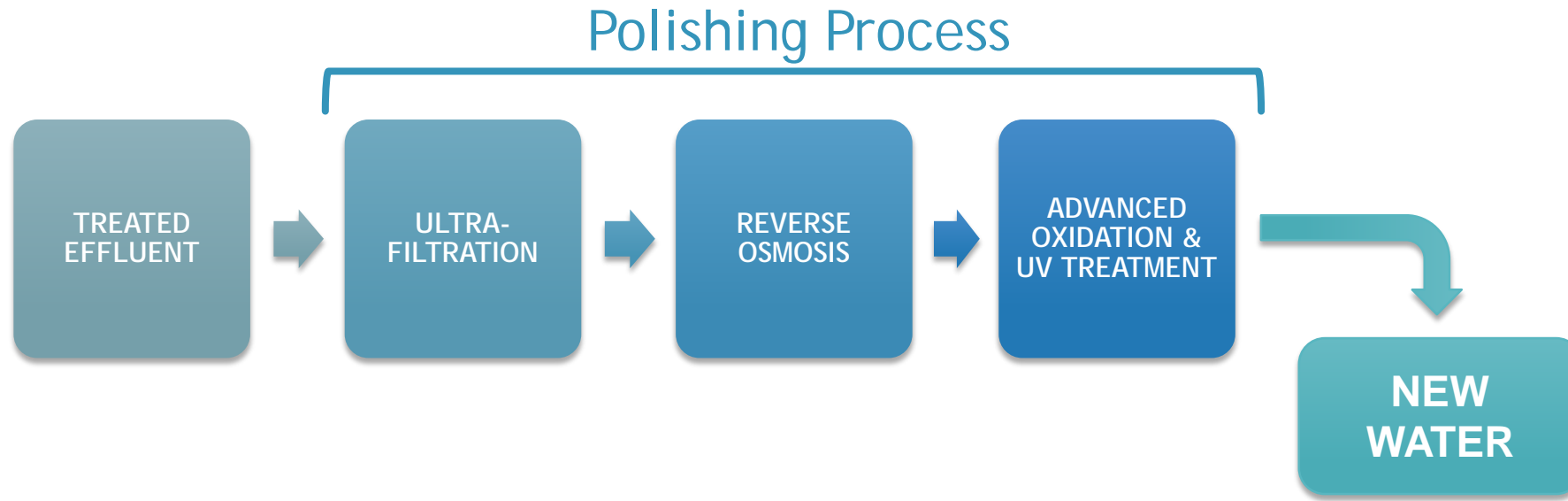
New Water Distribution Network

Stephen Zammit

Introduction

- ▶ What is New Water?
- ▶ What have we done up to now - Project Phase I
- ▶ What we are planning to do - Project Phase II
- ▶ Q & A time

What is New Water?



- ▶ New water is produced from the polishing of treated waste water which has till now been treated to bathing quality and disposed of in the sea.

What is New Water?



Who can use New Water?

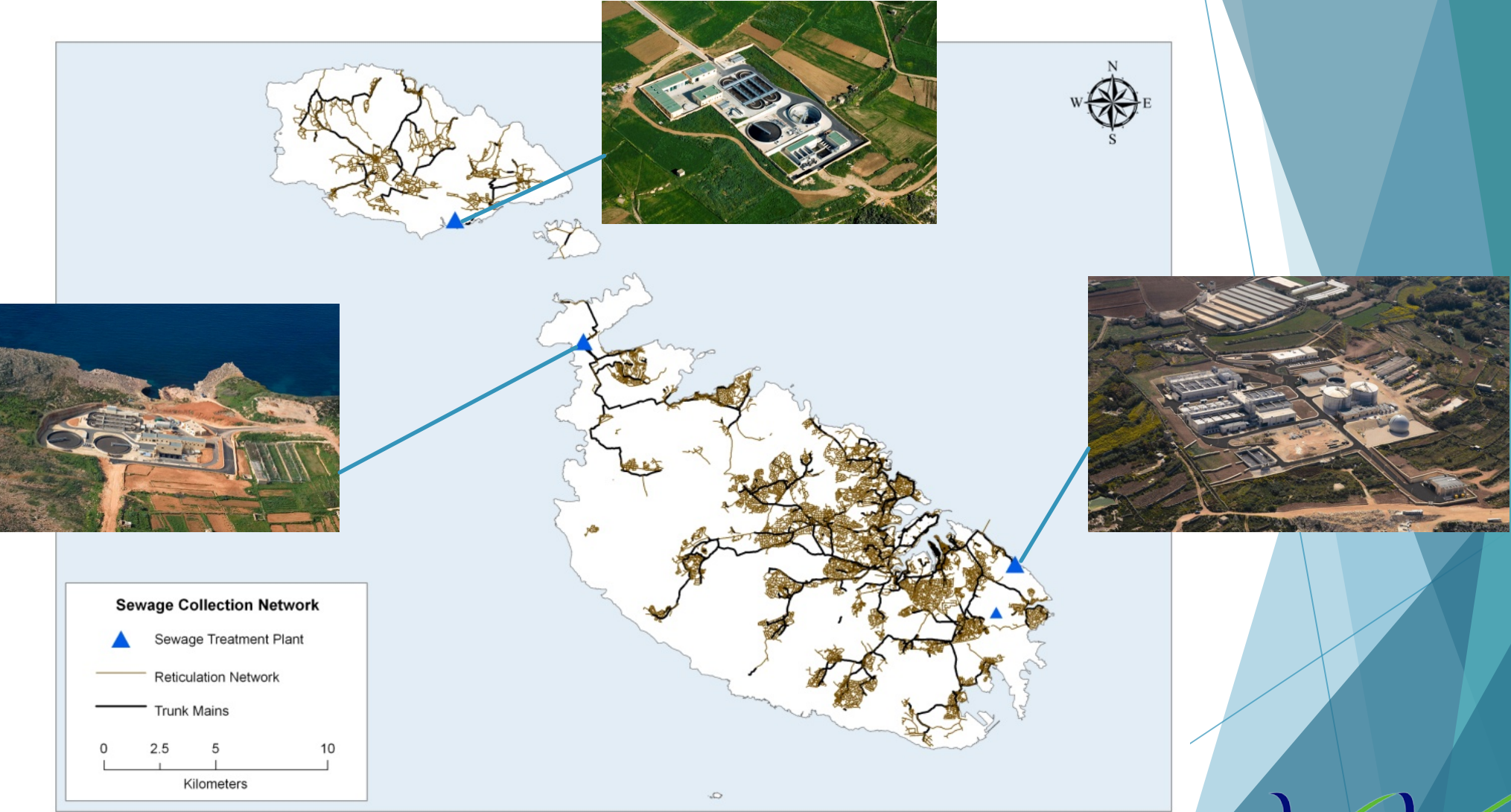
- ▶ New water will be classified as second class highly polished reclaimed water, or Non-Potable Water. As such its uses will be limited by law.
- ▶ Mainly recommended for agricultural irrigation and selected industrial usage.
- ▶ Applications will be analysed by a board prior to granting access to New Water.

Project Description

► Phase 1: 2007-2013 programming period

- WSC invested in 3 polishing plants (2 in Malta and 1 in Gozo) to enable the production of 7 million m³ of highly polished reclaimed water for the use of industry and agriculture.
- Currently one plant (Ċumnija - North) is commissioned.
- At this stage the delivery of the polished water is envisaged to be carried out by the use of water tankers from specific distribution points.

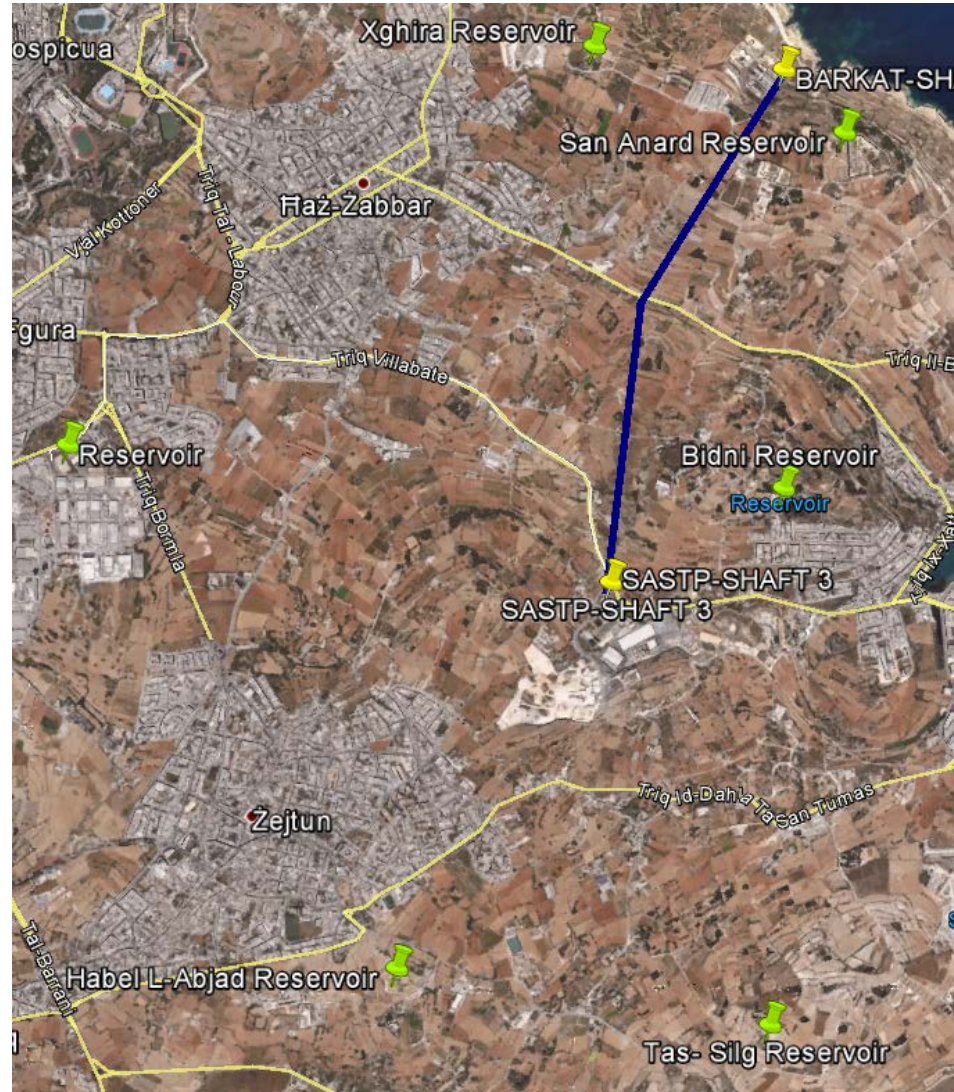
Phase 1 The 3 Treatment Plants



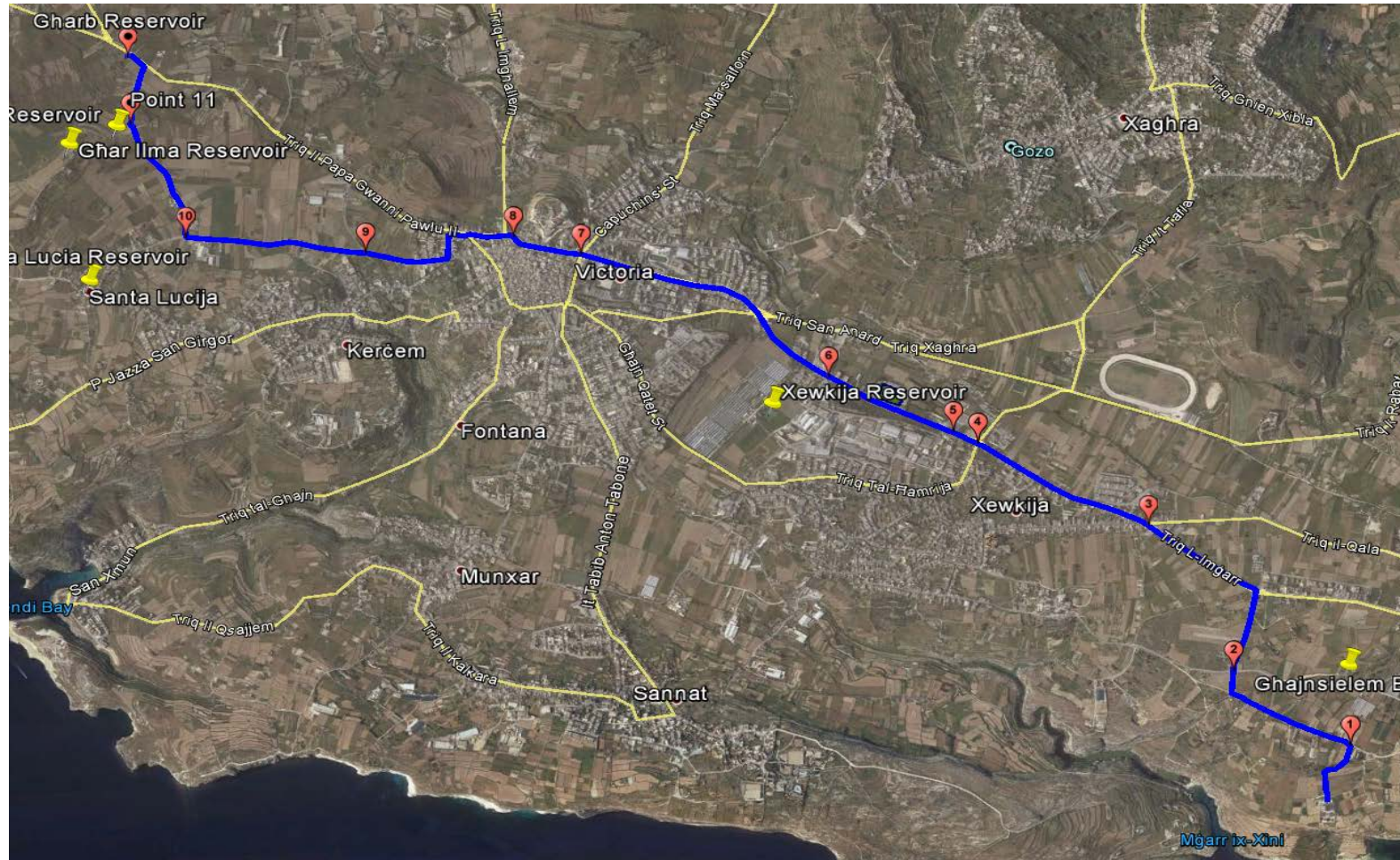
Phase 1 Main Supply - North



Phase 1 Main Supply - South



Phase 1 Main Supply - Gozo



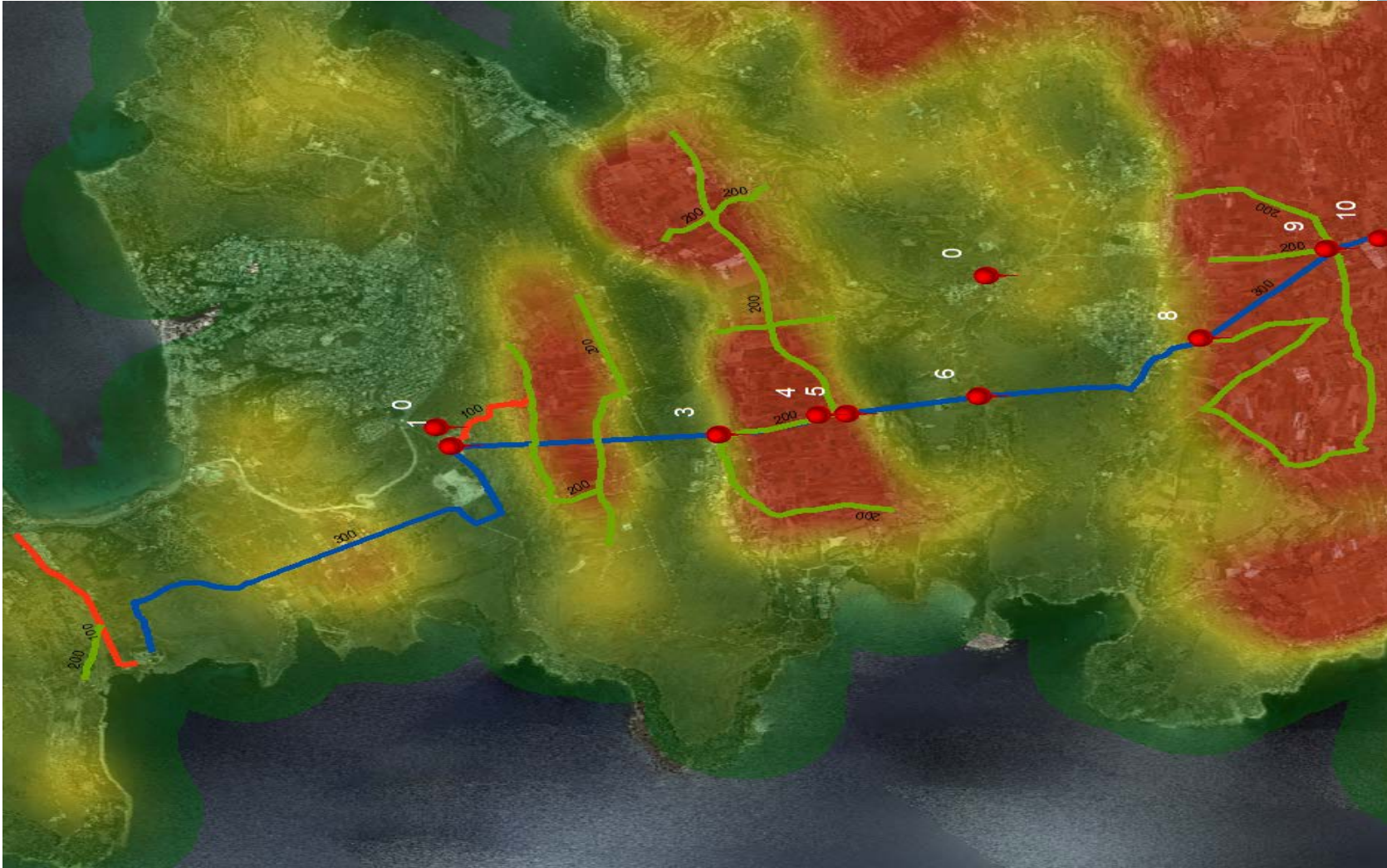
Project Description

- ▶ Phase 2: 2014-2020 programming period
 - ▶ Distribution Network - Gozo Region - 8Km
 - ▶ Distribution Network - North Region - 16Km
 - ▶ Distribution Network - South Region - 30Km
 - ▶ Horizontal Directional Drilling (HDD) supplies to 3 South Reservoirs
 - ▶ Construction of new 6400m³ Reservoir in Gozo

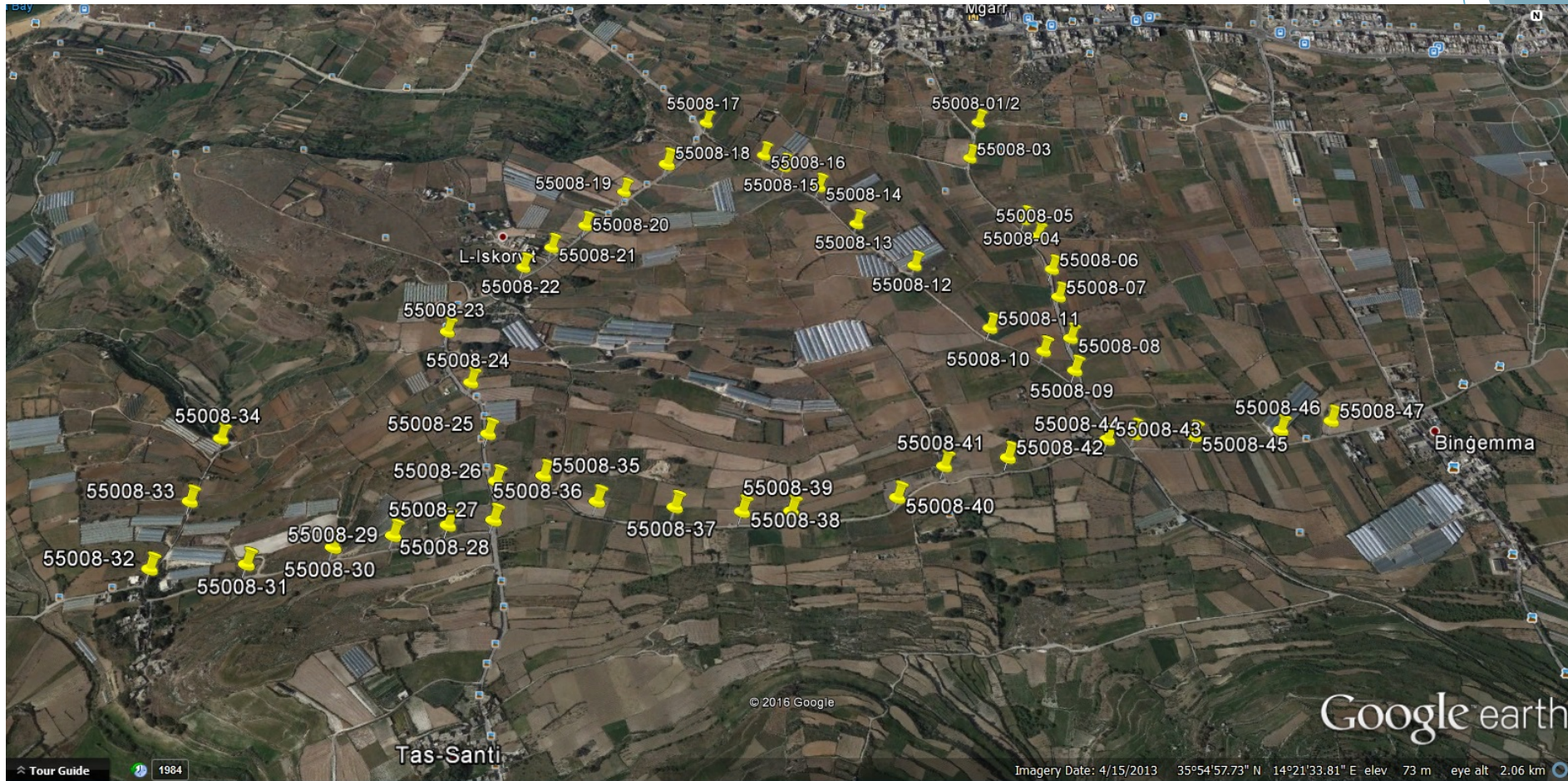
Agricultural Area to be Served

- ▶ In order to calculate the area required an annual consumption of 5000 m³/ha was considered.
- ▶ In view of this it is planned that:
 - ▶ Ċumnija will serve 450 ha (North)
 - ▶ Barkat will serve 600ha (South)
 - ▶ Ras il-Ħobż will serve 200 ha (Gozo)
- ▶ Total area served will be 1250 ha.

North Proposed Distribution Network



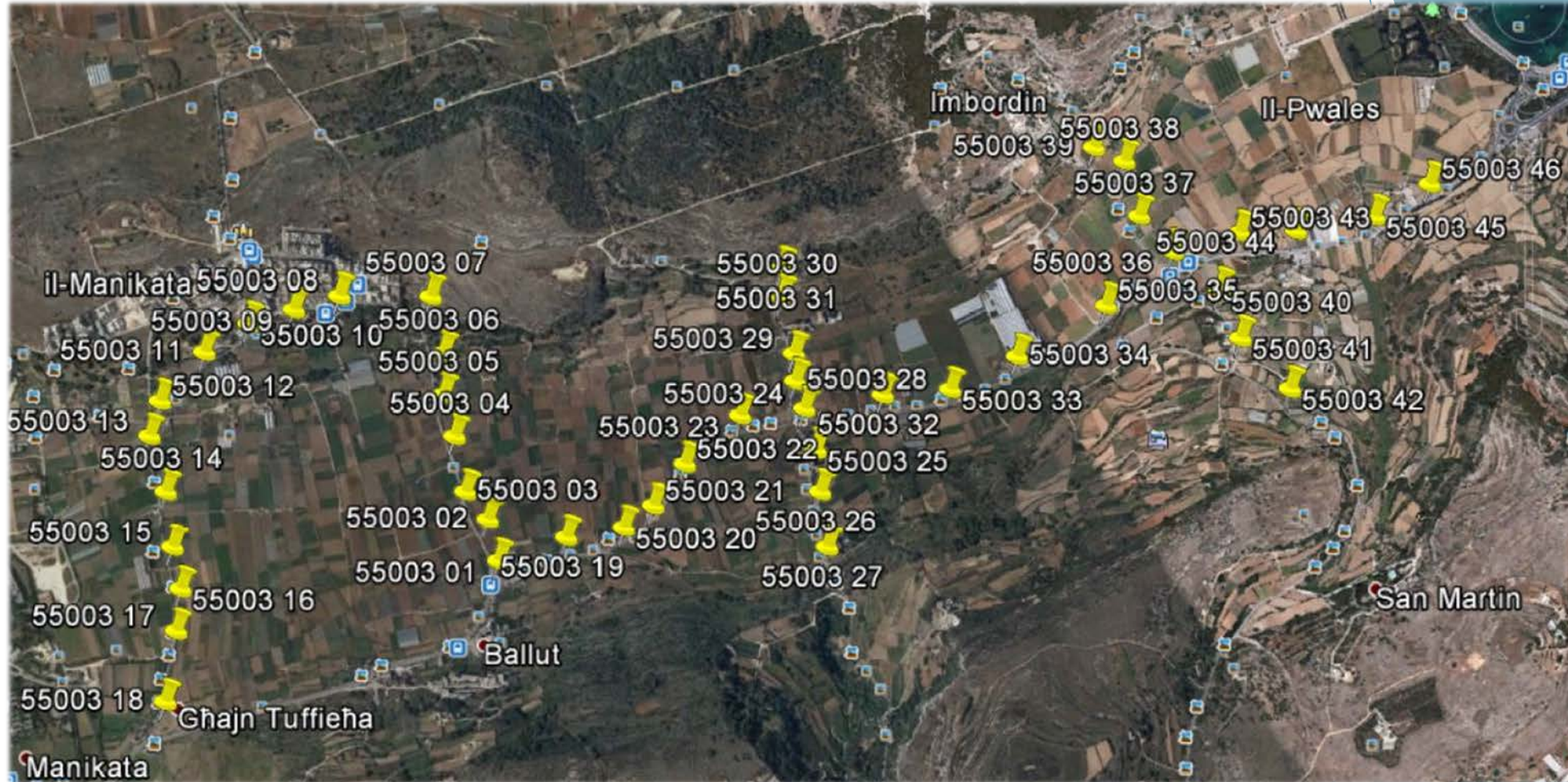
Phase 2 North Network - Bingemma



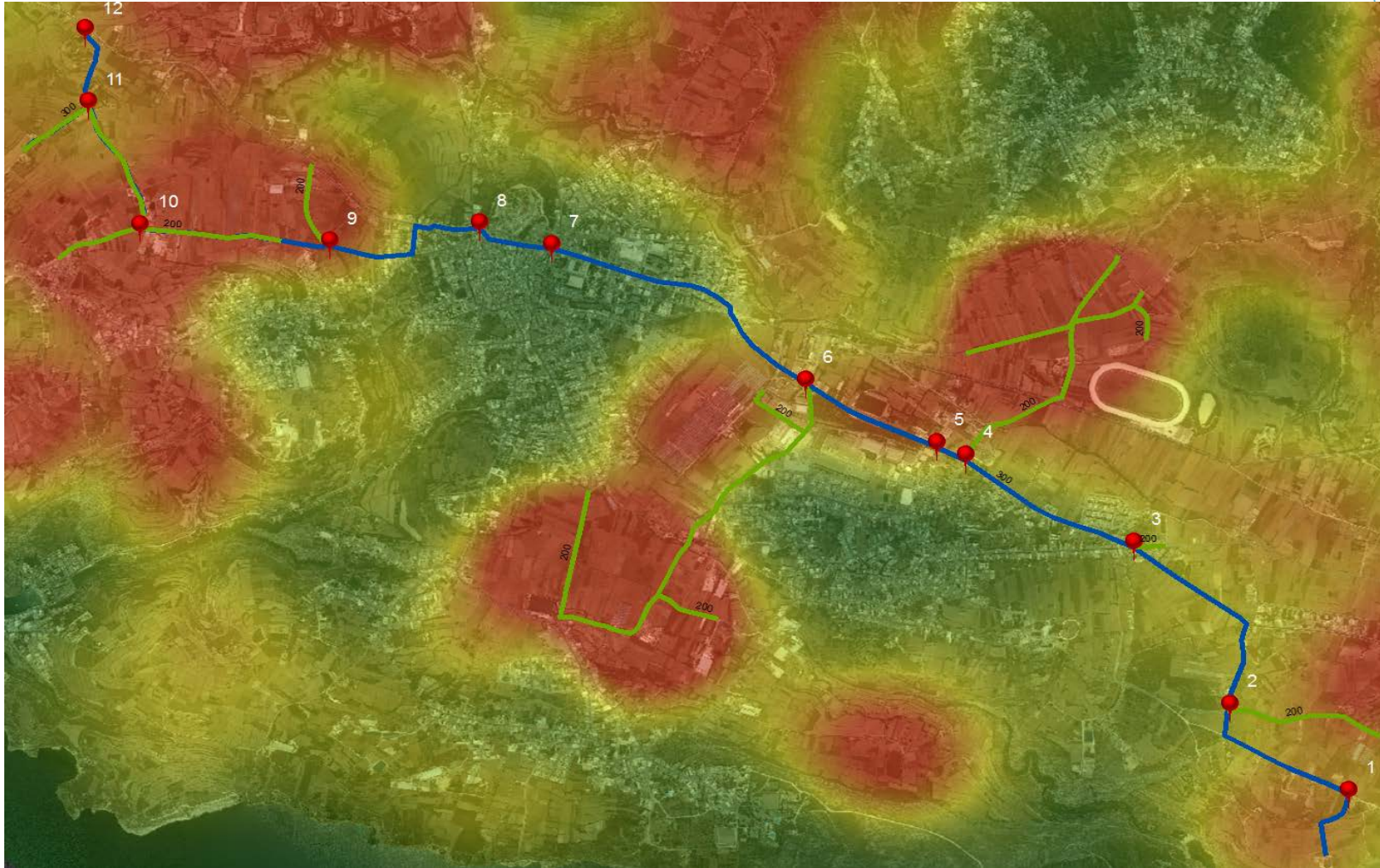
Phase 2 North Network - Mizieb



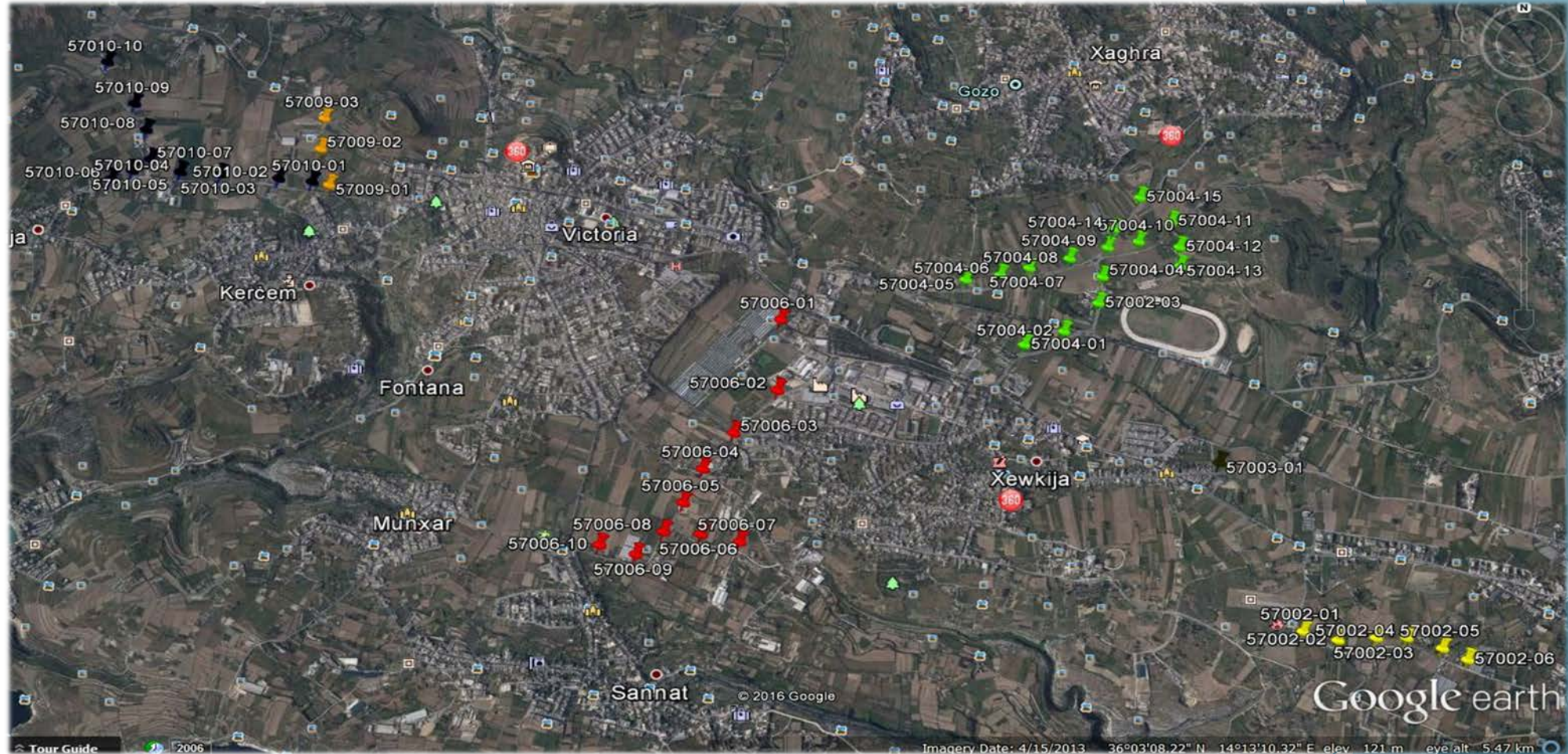
Phase 2 North Network - Pwales



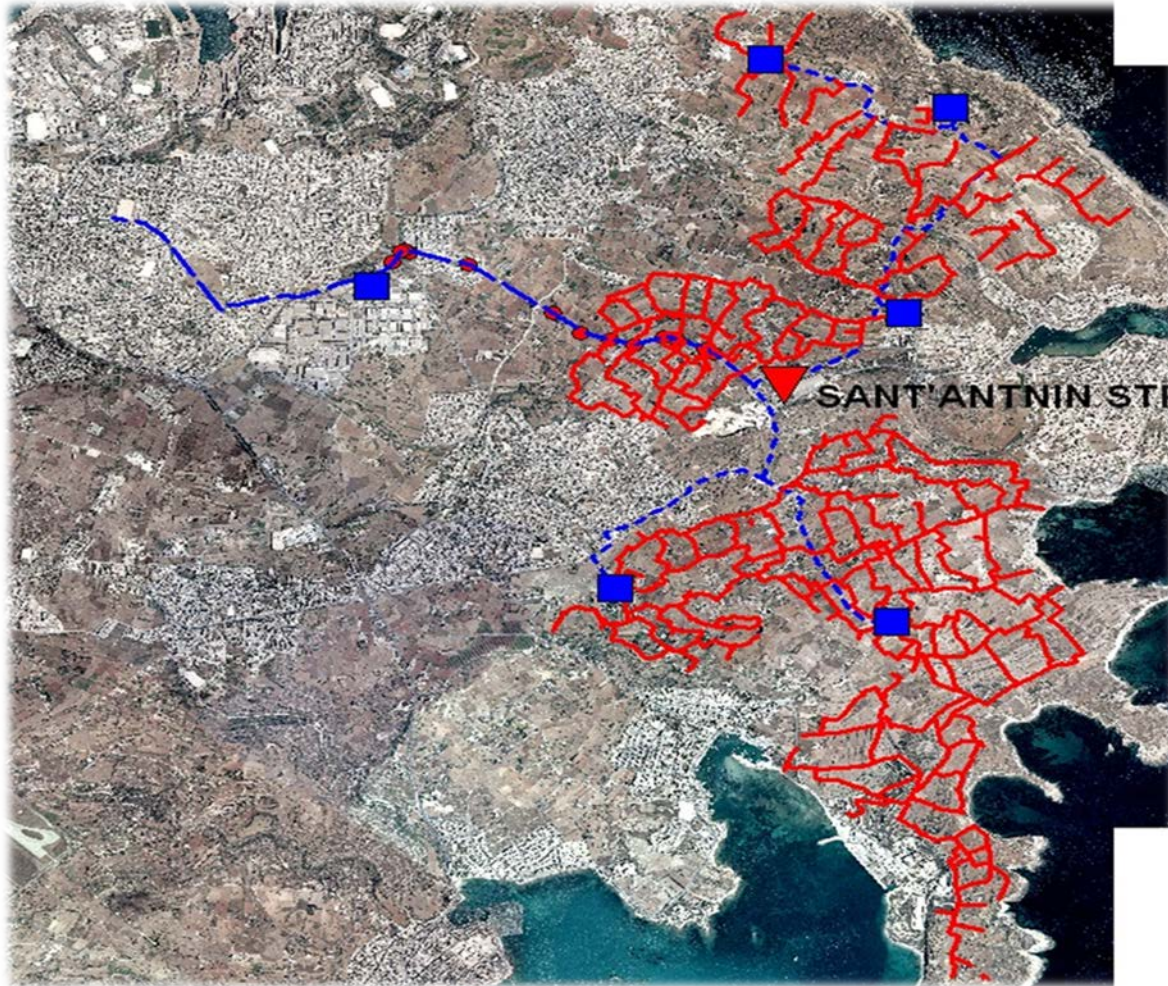
Gozo Proposed Distribution Network



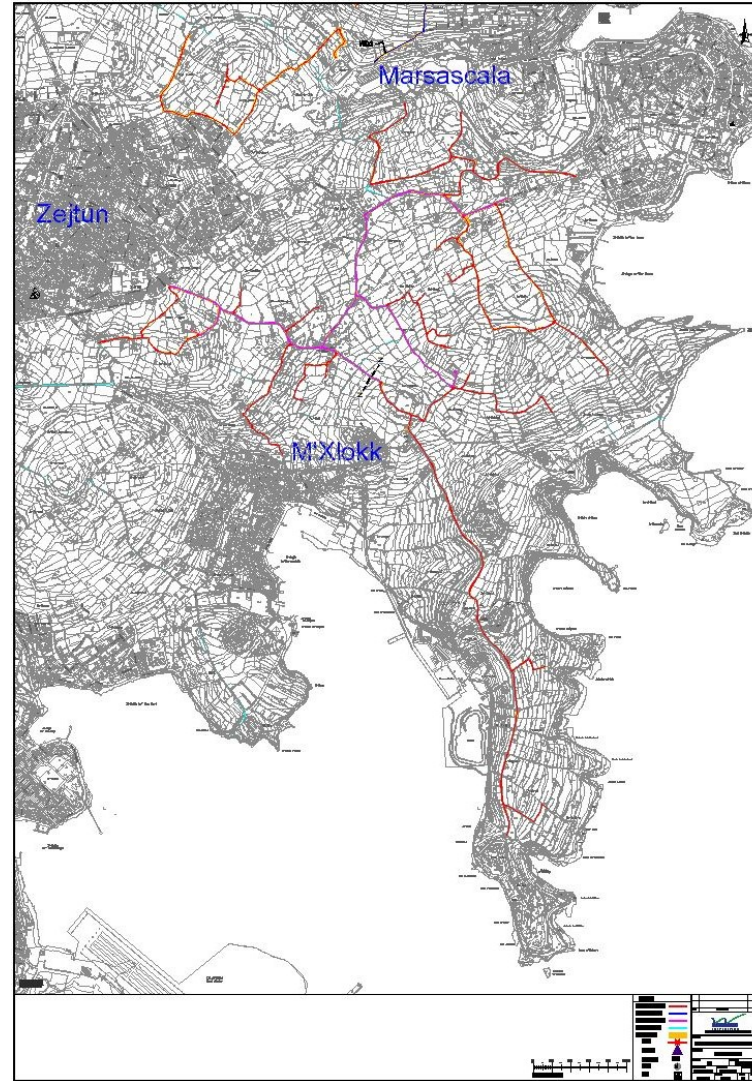
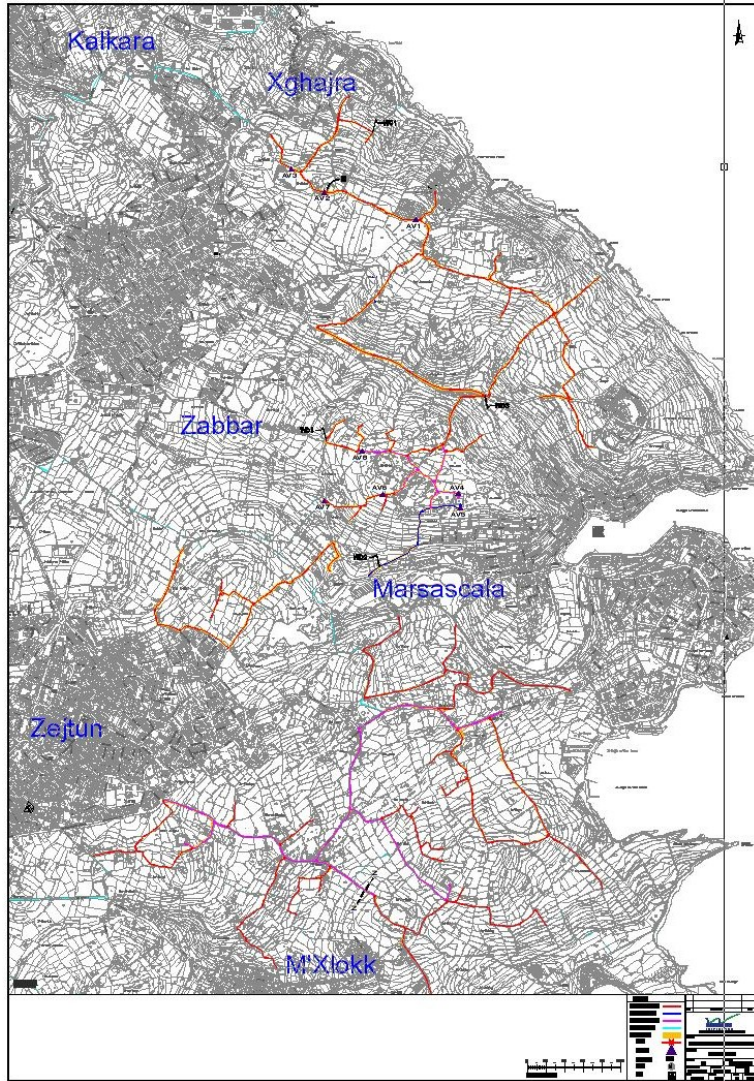
Phase 2 Gozo Network



South Existing Network



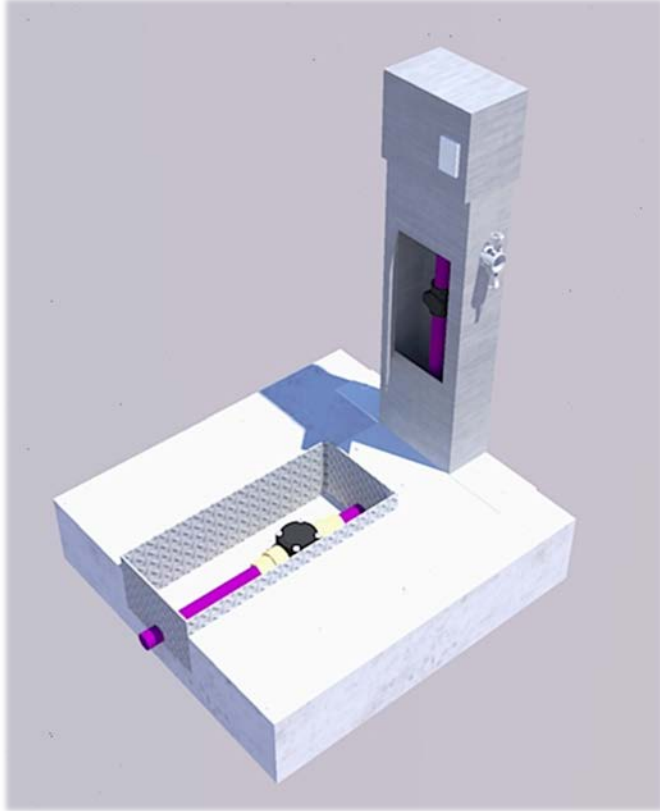
Phase 2 Proposed South Network



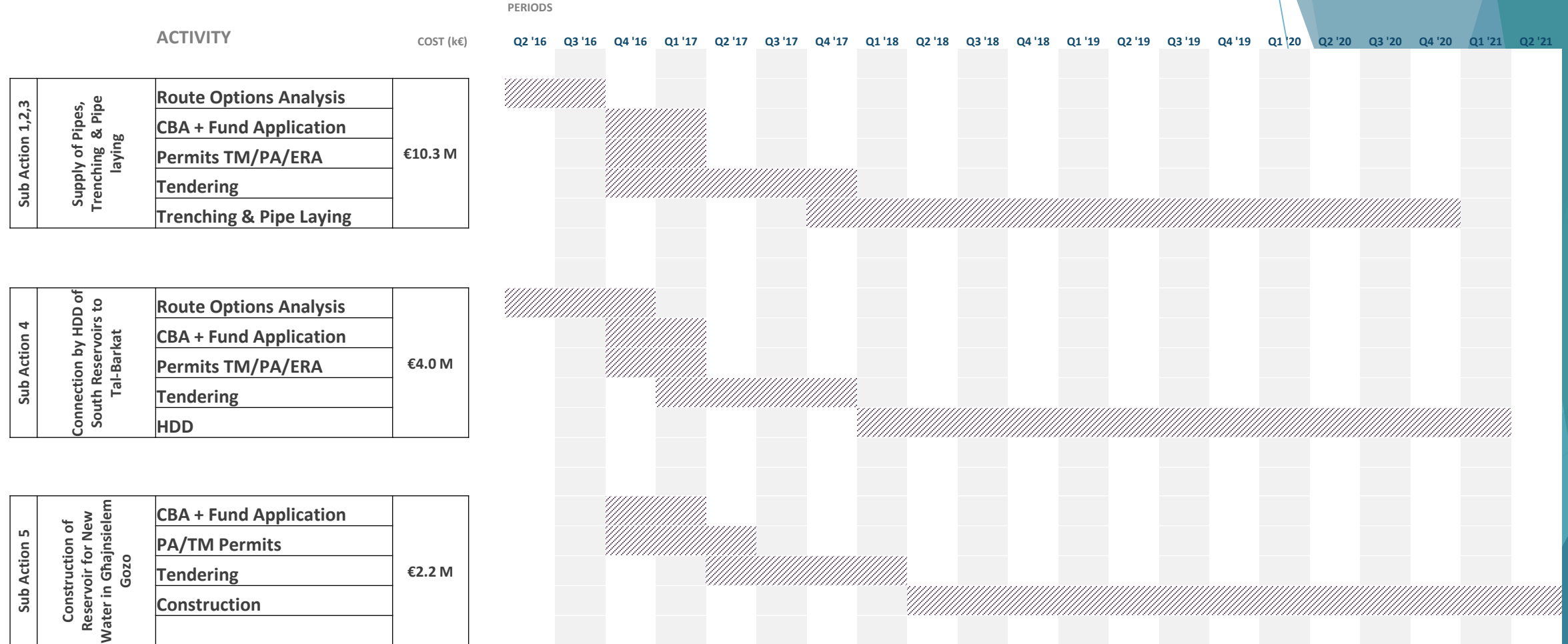
Prepaid Dispensing System



Phase 2 Water Dispensing Point



Phase 2 New Water Distribution Network



Advantages of Using New Water

- ▶ High quality of water - much better than Ground Water
- ▶ Reduce dependence on Ground Water - Less over-abstraction
- ▶ Improvement in Ground Water over the long term



Thank You

